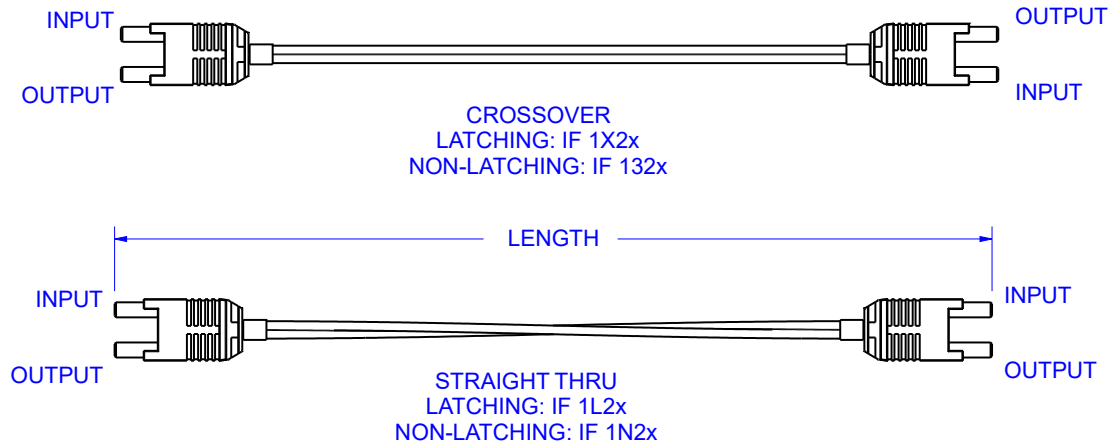


REVISIONS

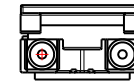
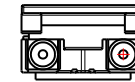
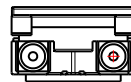
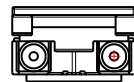
REV	DESCRIPTION	ECO	DATE	DWN	APVD
A	Redrew, added notes for non-latching cables	00110	3/16/2011	BB	KS
B	Changed labels and twisted cable for clarification	00196	9/4/2014	BB	EK
C	Added tables with length tolerance and fiber types	00417	9/21/2022	BB	DDH

LENGTH	TOLERANCE
0.1m	+0.03;-0.0m
0.2-0.99m	± 0.03m
1-5.49m	± 0.05m
5.5-12.99m	± 0.1m
13-29.99m	± 0.15m
30-50m	± 0.3m
50.1 - 80	± 0.5m



USE A CROSSOVER CABLE FOR PATCHES WHERE THE TRANSMITTERS AND RECEIVERS ARE ON THE SAME SIDES OF EACH CONNECTOR.

USE A STRAIGHT THROUGH CABLE FOR PATCHES WHERE THE TRANSMITTERS AND RECEIVERS ARE ON OPPOSITE SIDES OF EACH CONNECTOR.



INPUT OUTPUT

INPUT OUTPUT

INPUT OUTPUT

OUTPUT INPUT

SERIES	FIBER*
IF 1x2D	DC-1000W SH4002
IF 1x2L	TC-1000W GH4002
IF 1x2M	TCV-1000W GHV4002
IF 1x2N	TCF-1000W GHCP4002
IF 1x2Q	GHTT4002

*The fiber cable used for the assembly will be based upon the category of cable used for the SERIES. Asahi Kasei and Mitsubishi Eska optical fiber cable are shown, however other manufacturers' cable may be used based on availability.

UNLESS OTHERWISE SPECIFIED
DIMENSIONS

MILLIMETERS [IN.]

DIMENSIONS ARE FOR REFERENCE ONLY
NO TOLERANCES MAY BE IMPLIED FROM THIS DOCUMENT

PRODUCT

MATERIAL

FINISH

DRAWN BY B. Bidwell

DATE 3/16/2011

CHECKED BY K. Stotz

DATE 8/26/2009

Industrial Fiber Optics
TEMPE, AZ 85281

NAME

Duplex Versatile Link Patchcord

SIZE

A

SCALE

1:1

DOCUMENT NUMBER

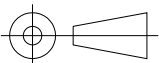
IF 1X2L

REV

B

DO NOT SCALE DRAWING

1 OF 1



METRIC